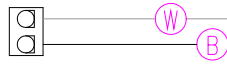


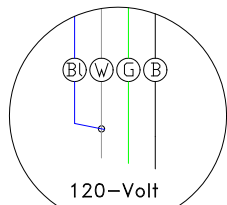
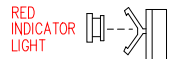
LIGHT RECP.
"WHITE 2-PIN" AMP



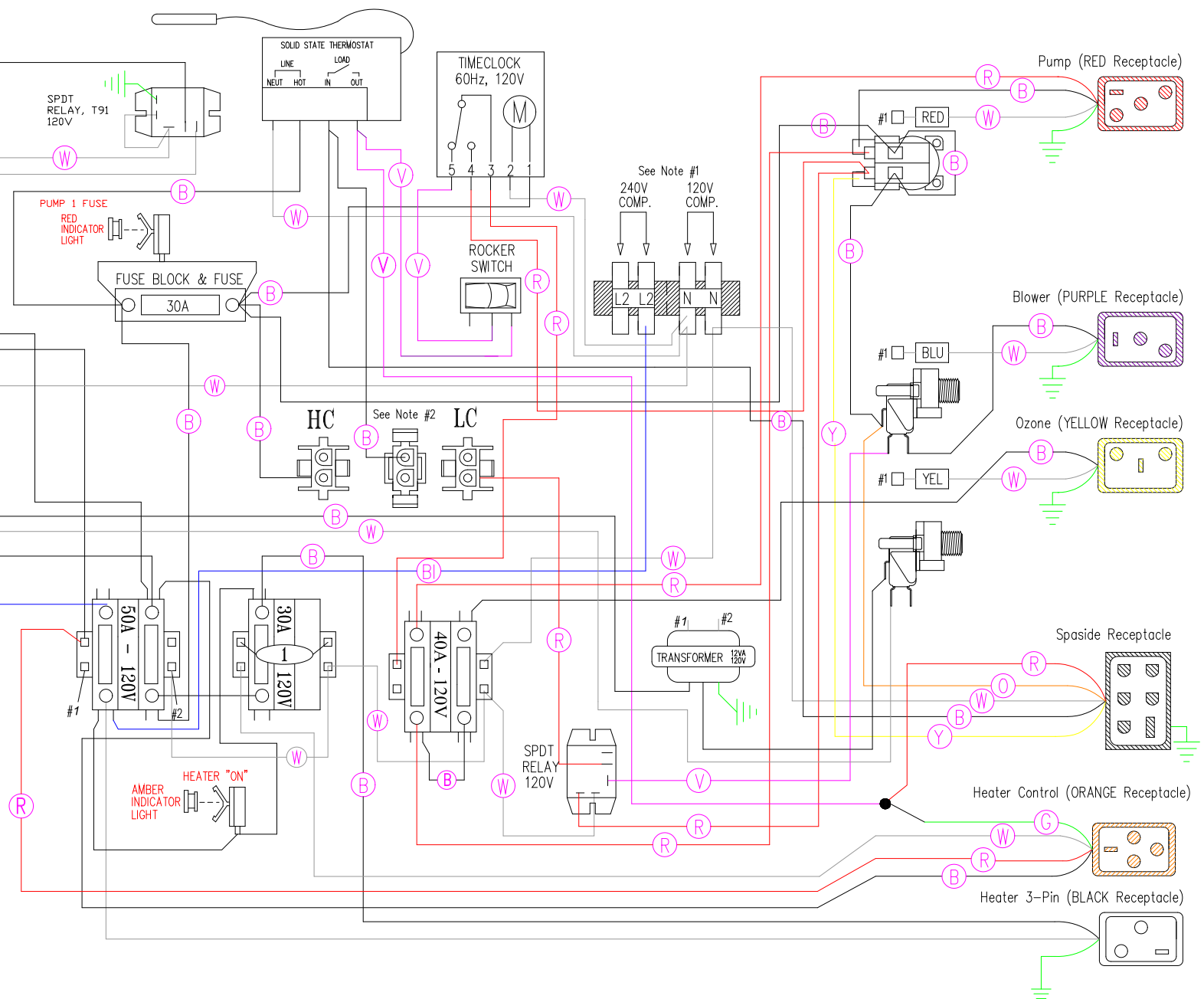
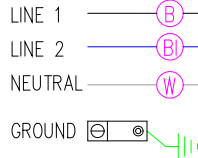
SYSTEM MIS-WIRE



HIGH-LIMIT TRIPPED



Line 2 & Neutral must be connected for 120V input.



HYDRO QUIP
CORONA, CA (909) 273-7575

Manufacture Notes: #1 - Universal System, connecting the White/Component receptacle wire to the corresponding position on the Universal Terminal Block determines component voltage.

#2 - Low Current (heater off w/high-speed pump or blower) or High Current (no heater restriction)

Dwg. No.
506G0-DKS5

Drawn
BH

Rev
3

Date
02.19.05

Diagram No.
7502

Wire Color Code

B - Black	G - Green
Br - Brown	Bl - Blue
R - Red	V - Violet
O - Orange	W - White
Y - Yellow	Gr - Gray